

FitzKidz®

Paediatric Footwear Range



Sizes 16 to 20 **C**
Widths XN, N, M, W, XW

Coolz

First choice for those exciting first steps, with a range of colours and fastenings available.



Black | Leather
FK10C05



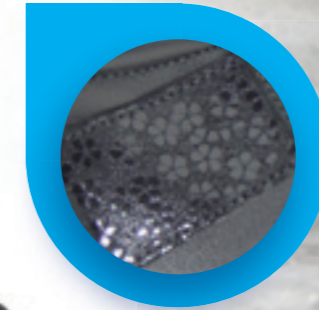
White | Black | Leather
FK10C50



White | Pink | Leather
FK10C53



Black | Leather | Nubuck
FK11C06



Sizes 20 to 38 **SD**
Widths XN, N, M, W, XW

Coolz

Navy | Leather | Nubuck
FK11C27



Burgundy | Leather | Nubuck
FK11C18



Grey | Leather | Nubuck
FK11C25



Coolz

Sizes 20 to 38 **SD**
Widths XN, N, M, W, XW

Jazz

Our best seller for everyday wear, this range is extremely versatile - and is designed to fit any child.



Black | Leather
FK12C05



Royal Blue | Nubuck
FK12C45



Brown | Nubuck
FK12C15



Red | Leather | Nubuck
FK12C42



Purple | Nubuck
FK12C40



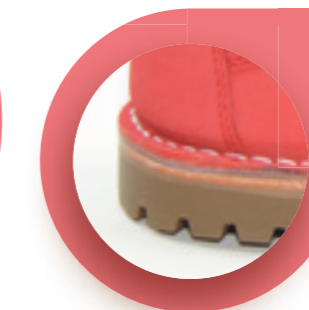
Pink | Leather
FK12C33



Grey | Nubuck
FK12C27



Red | Nubuck
FK12C43



Navy | Leather | Nubuck
FK12C27



Black | Patent
FK12C08



Sizes 20 to 38 **SW**
Widths N, M, W

Jazz sneakers

A classic style with sneaker soles for active children.

Red | Nubuck | Sneaker sole
FK13C43



Royal Blue | Nubuck | Sneaker sole
FK13C45



Black | Leather | Sneaker sole
FK13C05



Velcro®
Optional feature

Pink | Leather | Sneaker sole
FK13C33



Velcro®
Optional feature

Sizes 20 to 38 **SD**
Widths XN, N, M, W, XW

Angelz

Pretty, stylish boots with intricate flower and heart detail.

Black | Patent
FK14C08



Burgundy | Nubuck
FK14C19



Pink | Nubuck
FK14C35



Velcro®
Optional feature



Tan | Nubuck
FK14C48



Velcro®
Optional feature



Sizes 20 to 38 **SD**
Widths XN, N, M, W, XW

Stomperz

Stylishly designed in contrasting colours, these nubuck boots are ideal for kids with a real sense of adventure.

Navy | Tan | Nubuck
FK15C31



Black | Grey | Nubuck
FK15C04



Brown | Navy | Nubuck
FK15C14



Burgundy | Nubuck
FK15C19



Navy | Red | Nubuck
FK15C30



Grey | Black | Nubuck
FK15C23




Tan | Orange | Nubuck
FK15C49



 Velcro®
Optional feature

Tan | Green | Nubuck
FK15C46



 Velcro®
Optional feature

Sizes 20 to 38 **SD**
Widths XN, N, M, W, XW

Kickz

A sturdy boot with clean lines and a classic design.

Black | Leather | Nubuck
FK16C06



Pink | Leather | Nubuck
FK16C34



Red | Leather | Nubuck
FK16C42



Brown | Leather | Nubuck
FK16C13



Brown | Leather | Nubuck
FK17C13



Sizes 20 to 38 **SW**
Widths N, M, W

Kickz



Black | Leather | Nubuck
FK17C06



Blue | Leather | Nubuck-
FK17C11



Purple | Leather | Nubuck
FK17C39




Sizes 20 to 42 **SD**
Widths XN, N, M, W, XW

Hoopz

High top boots in a range of colours for children who need extra support.

Black | Leather
FK18C05



 Velcro®
Optional feature

Blue | Leather
FK18C10



Pink | Leather
FK18C33



Black | Leather
FK19C05



Blue | Leather
FK19C10



 Velcro®
Optional feature

Sizes 20 to 38 **SW**
Widths N, M, W

Hoopz


Pink | Leather
FK19C33



 Velcro®
Optional feature

Purple | Leather
FK19C38



 Velcro®
Optional feature

Purple | Leather
FK18C38



Sizes 20 to 38 **SD**
Widths XN, N, M, W, XW

Twirlz

A twist on the classic summer sandal featuring on-trend metallic leathers.

Burgundy | Leather
FK20C17



Blue | Leather
FK20C10



Charcoal | Leather
FK20C21



Twirlz

Sizes 20 to 42 **SD**
Widths XN, N, M, W, XW

Rebelz

This desert-style boot can be worn as either smart or casual. The style is fully adaptable with extra stability, and comes in all widths.

Tan | Nubuck
FK21C48



Brown | Nubuck
FK21C15



Black | Nubuck
FK21C07



Velcro®
Optional feature

Purple | Nubuck
FK21C40



Velcro®
Optional feature



Sizes 20 to 38 **SW**
Widths N, M, W

Sportz

An on-trend high top which benefits from extra stability as standard. This style can be manufactured in a range of traditional sporty colours.



Black | Leather
FK22C05



White | Navy | Leather
FK22C51



Velcro®
Optional feature

White | Red | Leather
FK22C54



Sizes 20 to 42 **C**
Widths XN, N, M, W, XW

Sandalz

A recent addition to the FitzKidz range, developed due to popular demand. The combination of ring-pull and VELCRO® creates a secure fastening that is still easy to don and doff.



Navy | Leather | Nubuck
FK23C27



Purple | Leather | Nubuck
FK23C34



Brown | Leather | Nubuck
FK23C13



Black | Leather | Nubuck
FK23C06



Baby Pink | Leather | Nubuck
FK23C02



Baby Blue | Leather | Nubuck
FK23C01

Sizes 20 to 38 **SW**
Widths N, M, W

Dodgerz

A classic baseball style featuring an eye-catching combination of leathers.

Black | Nubuck
FK24C07



Red | Nubuck
FK24C43



Purple | Nubuck
FK24C40



Royal Blue | Nubuck
FK24C45



Sizes 20 to 38 **SW**
Widths N, M, W

Twisterz

A twist on the classic baseball style, these shoes feature panels and textured leathers to create a high street look.

Burgundy | Leather | Nubuck
FK25C18



Black | Leather | Nubuck
FK25C11



Baby Pink | Leather | Nubuck
FK25C02



Navy | Leather | Nubuck
FK25C27



Sizes 20 to 38 **SW**
Widths N, M, W

Polarz

A casual option featuring sneaker soles, which can easily accommodate orthoses.

Red | Nubuck
FK26C43



Royal Blue | Nubuck
FK26C45



Purple | Nubuck
FK26C40



Black | Nubuck
FK26C07



White | Nubuck
FK26C52



Sizes 20 to 38 **SW**
Widths N, M, W

Urbanz

Made of water-resistant fabric, these boots allow for extra stability and control whilst keeping a fun look and feel.

Denim | Cotton Twill
FK27C22



Pale Blue | Cotton Twill
FK27C32



Purple | Cotton Twill
FK27C37



Polarz & Urbanz

Sizes 20 to 38 **SW**
Widths N, M, W

Marinez

Casual u-front design featuring 3D rubberising fabric and a nubuck finish.

Purple | Nubuck
FK28C40



Navy | Nubuck
FK28C28



Royal Blue | Nubuck
FK28C45



Sizes 25 to 42 **SD**
Widths XN, N, M, W, XW

Smasherz

Our original high stability boot comes with additional padding around the collar and tongue.

Grey | Leather | Nubuck
FK29C25



Brown | Leather | Nubuck
FK29C13



Navy | Leather | Nubuck
FK29C27



Black | Leather | Nubuck
FK29C06



Burgundy | Leather | Nubuck
FK29C18



Sizes 25 to 42 **SD**
Widths XN, N, M, W, XW

Grooverz

Durable, practical boots for teenagers and young adults.



Sizes 25 to 42 **SD**
Widths XN, N, M, W, XW

Katz

Stylish boots featuring metallic leathers, in line with high street fashion.



Sizes 20 to 42 **SD**
Widths XN, N, M, W, XW

Heartz

A unique heart design and patent leathers make these boots stand out from the crowd.

Brown | Patent | Nubuck
FK32C16



Red | Patent | Nubuck
FK32C44



Purple | Patent | Nubuck
FK32C41



Navy | Patent | Nubuck
FK32C29



Pink | Patent | Nubuck
FK32C36



Black | Patent | Nubuck
FK32C09



Burgundy | Patent | Nubuck
FK32C20



Sizes 25 to 42 **SD**
Widths XN, N, M, W, XW

Treadz

Designed as a heavy duty walking boot, with quality leathers and maximum stability for the highest level of support.

Black | Leather
FK33C05



Grey | Leather
FK33C24



Burgundy | Leather
FK33C17



Brown | Leather
FK33C12



Sizes 25 to 42 **SD**
Widths XN, N, M, W, XW

Chunkz

This style has been developed for durability, featuring specially selected roller ball fastenings and grained leather.

Brown | Leather
FK34C12



Tan | Leather
FK34C47



Navy | Leather
FK34C26



Black | Leather
FK34C05



